



COMPANY PROFILE

Simtex Industries PLC.

Largest Bangladeshi Sewing Thread Manufacturer

www.simtexgroup.com

OEKO-TEX®
CONFIDENCE IN TEXTILES
STANDARD 100

07.KA.53099 Hohenstein HTTI

Tested for harmful substances
www.oeko-tex.com/standard100



Achievement



Ms. Hafiza Khanam, Director of Simtex Industries PLC. receiving Trophy from the Respected President of the Federation of Bangladesh Chamber of Commerce and Industry (FBCCI) Mr. Sheikh Fazle Fahim on being awarded 'BGAPMEA Export Troppg -2019' in large Category.



Achievement



Mr. Neaz Rahman Shaqib, Managing Director of Simtex Industries PLC, receiving BGAPMEA Export Trophy-2021 from Respected President of BGAPMEA Mr. Mohammad Moazzem Hossain Moti & Information Minister Hasan Mahmud.

Monitoring summary report for Simtex Industries Limited MONITORING ID: 24-0292943



Monitored Party Simtex Industries Limited	amfori ID 050-000734-000	Address Khagan, Birulia, Savar, 1341 Dhaka, Dhaka, Bangladesh
Monitoring Activity amfori Social Audit - Manufacturing	Monitoring Type Full Monitoring	Monitoring Partner ELEVATE
Monitoring Start Date 01/12/2024	Closing Meeting Finished Date 01/12/2024	Submission Date 06/12/2024
Expiration Date 06/12/2026	Announcement Type Semi Announced	
Site Simtex Industries Limited	Site amfori ID 050-000734-002	

This is an extract of the online Monitoring Result, generated on 07/12/2024, and is only valid as an acknowledgment of the result. To see all the details, review the full monitoring result, which is available on the [amfori Sustainability Platform](#) - The English version is the legally binding one.

amfori does not assume any liability with regard to the compliance of this extract, or any versions of this extract, with the Regulations (EU) 2019/1024 (General Data Protection Regulation).

All rights reserved. No part of this publication may be reproduced, translated, stored in a retrieval system, or transmitted, in any form or by any means electronic, mechanical, photocopying, recording or otherwise, be lent, hired out or otherwise circulated without the prior consent of amfori, 2021

OVERALL RATING



SECTION RATING

PA1: Social Management System	C	
PA 2: Workers Involvement and Protection	B	
PA 3: The Rights of Freedom of Association and Collective Bargaining	A	
PA 4: No Discrimination, Violence or Harassment	A	
PA 5: Fair Remuneration	A	
PA 6: Decent Working Hours	A	
PA 7: Occupational Health and Safety	A	

MONITORING ID: 24-0292943 | Monitoring summary report for Simtex Industries Limited — 1 / 13



GSCS International Ltd.
Rakeya Palace, House 75, Road 19, Sector 11, Uttara, Dhaka-1230, Bangladesh
Tel: +88 02 5508 6965; info@gscsbd.com, Web: www.gscsintl.org

Scope Certificate

Scope Certificate Number GSS-GRS-20214953

GSCS International Ltd.
certifies that

Simtex Industries PLC

Textile Exchange ID (TE-ID): TE-00051383

Client Number TE-20200056

Khagan, Birulia, Savar, 1341, Dhaka, BD-C, Bangladesh, BD

has been audited and found to be in conformity with the

Global Recycled Standard (GRS) (Version 4.0)

Product categories mentioned below (and further specified in the product appendix) conform with the standard(s):

Functional accessories (PC0017)

Process categories carried out under responsibility of the above mentioned organization for the certified products cover:

Preparatory (PR0022), Dyeing (PR0008), Finishing (PR0012), Packing (PR0020)

The process marked with an asterisk may be carried out by subcontractor.

This Certificate is valid until: 2024-09-14

Audit criteria: Global Recycled Standard (GRS) 4.0; Content Claim Standard V3.1; Textile Exchange Standards

Claims Policy V1.3

Place and Date of Issue

Dhaka, 2025-09-17

Last Updated: 2025-09-17

Extended Until: N/A

Status: Active

Certification Body



Standard



Name of the Authorized Person

Abdul Mokleeb



Certification Body Licensed by: Textile Exchange; Licensing Code: CB-GSS

Certification Body Accredited by: ANAB; Accreditation Number: 9126

Inspection Body: GSCS International Ltd.

Auditor(s): N/A

This scope certificate provides no proof that any goods delivered by its holder are Global Recycled Standard (GRS) 4.0 certified. Proof of Global Recycled Standard (GRS) 4.0 certification of goods delivered is provided by a valid transaction certificate (TC) or equivalent covering them.

The issuing body may withdraw this certificate before it expires if the declared conformity is no longer guaranteed.

To authenticate this certificate, please visit www.textileexchange.org

This electronically issued document is the valid original version
TE-40-TE-00051383

Page 1 of 3

Index

▶ Corporate Profile	2
▶ Managing Director's Message	3
▶ Tracing History	4
▶ Vision & Mission	5
▶ Our Values	6
▶ Our Strength	7
▶ Directors & Sponsors Organogram	8
▶ Company Management	9
Management & Entrepreneurs Sales & Marketing	Production & Quality Assurance Accounts & Finance HR, Admin & Compliance
▶ Our Products	12
Spun Polyester Poly Poly Core Spun Textured Polyester	Water Soluble Thread Thread Specification
▶ Products' Raw Materials Our Co Products	18
▶ Production Process	19
▶ World Class Laboratory	20
▶ Machinery	21
▶ R&D Services Around the Globe	22
▶ Advantages	23
Location Infrastructure	Distribution Utility Facilities
▶ Common Practices Related to Employee Welfare	25
▶ In Short	27
▶ Remembrance	28

CORPORATE PROFILE

Name of the Company	Simtex Industries PLC.
Legal Status	A public Company limited by shares, registered under Companies Act, 1994
Incorporation Number	C-67047 (4539)/2007
Registered & Corporate Office	Khagan, Birulia, Savar, Dhaka-1341, Bangladesh
Factory Location	Khagan, Birulia, Savar, Dhaka-1341, Bangladesh
Nature of Business	Manufacturer of Sewing Thread
Production Capacity	Upto 4.8 Million Cones per month
Authorized Capital	BDT 1,000 Million
Paid Up Capital	BDT 795.953 Million
Approval for IPO	July 23, 2015
Listed with	Dhaka Stock Exchange PLC and Chittagong Stock Exchange PLC.
Bankers	Trust Bank PLC, Millennium Corporate Branch, Dhaka-1000
Auditors	Habib Sarwar Bhuiyan & Co. Domino Domicillo, House-121, Flat-B1, Road-10, Block-c, Niketon, Gulshan-1, Dhaka-1212
Tax Consultants	Pinaki & Company Ideal Trade Centre, Shaheed Tajuddin Ahmed Ave, Dhaka 1208
Credit Rating	Long Term (A) Short Term (ST-3)
Credit Rating Agency	Credit Rating Information and Services Limited (CRISL)
Certification	STANDARD 100 by OEKO-TEX®, Appendix 6, Class 1 (Certified), GRS, BSCI, ICS
Insurer	<ul style="list-style-type: none"> • Nitol Insurance Company Limited • Crystal Insurance PLC • Federal Insurance PLC
Members	<ul style="list-style-type: none"> • Dhaka Chamber of Commerce & Industry (DCCI) • India-Bangladesh Chamber of Commerce & Industry (IBCCI) • Bangladesh Sewing Thread Manufacturers & Exporters Association (BSTMEA) • Bangladesh Textile Mills Association (BTMA) • Bangladesh Garments Accessories & Packaging Manufacturers & Exporters Association (BGAPMEA)
Contact Numbers	Hotline: +880 1713444424
Email	info@simtexgroup.com
Website	www.simtexgroup.com



MANAGING DIRECTOR'S MESSAGE

Simtex started its visionary journey with the mission to provide New Generation Sewing Solution to the RMG sector. Since its inception in year 2000, our vision is to mature as a sustainable, coherent organization offering quality products to the customers, employment opportunity to the society and significant contribution to the GDP of the country. Our relentless effort is to raise our competitiveness to the highest level and exceed customer expectation based on building long-term relationship with commitment for international standard quality, competitive price and efficient service.

We envisage growing further by continuous investment for both modernization and expansion to stand up as Largest and best Bangladeshi Sewing Thread Manufacturer with the continued support of customers, associates, stakeholders and employees.



TRACING HISTORY

A Journey with Many Milestones

The Roots

The Simtex Industries PLC. started its journey in 2000 with a small infrastructural facility at Mirpur, Dhaka, Bangladesh with the vision to bring revolution in Sewing Thread business. Since its launch Simtex Industries PLC has grown to become the country's leading Sewing Thread manufacturer with increased production capacity to capture major market share. Simtex Industries PLC. moved to its present plant in 2009 located at Khagan, Birulia, Savar with more sophisticated and modern facilities and started commercial production in the same year.

Simtex Industries PLC was incorporated with the registrar of Joint Stock Companies and Firms (RJSC) as a Private Limited Company initially and was converted to Public Limited Company later on November 15, 2012 under the Companies Act, 1994. The company floated its share to the public through IPO with 100% Premium on Jul 2015 to strengthen its financial backbone and was listed with Dhaka Stock Exchange PLC (DSE) and Chittagong Stock Exchange PLC (CSE).



The Evolution

Simtex Industries PLC continued its extensive range of modernization of its plants and upgrading its products to international standard. At present, we are having World famous most modern machineries, technically innovative lab and well trained efficient human resources. Currently we are having production capacity of 15-20 MT per day upto 4.8 million cones per month, ensuring international standard quality and minimum lead time in the

Recognition

In recognition of our contribution to the RMG Sector, we have been awarded BGAPMEA Export Trophy – 2022 in Large Category in its first ever held presentation ceremony.



VISION

To become the market leader of the thread industry in this decade through high productivity, acquiring advanced technology and absolute customer satisfaction by leveraging on the strengths of our well experienced professionals.



MISSION

To meet up market needs through a closer working relationship with our Business Partners, efficient manufacturing process and maintaining efficient customer service

OUR VALUES

Define our Actions

Our aim is not only commercial success but also to be a leader in Sewing Thread market and holistically growing in every way possible.



Customers Satisfaction

Our customers are the reason for what we are today. It is therefore, our constant endeavor just not to meet their expectation, but to ensure customers' delight.



Excellence in Quality Production

We strive to be the best in everything we do for ensuring quality production and timely delivery to the customers. We are not only developing innovative products but also ensuring International Standard, which make the difference.



Integrity

We are sincere and honest in what we do. We believe that business is not just a deal, we are looking forward for a good and long-term relationship.



Innovation

We aspire to develop new products for fulfilling the requirement of our customers. At the same time, we improve our existing products to higher standards for



People: Our Greatest Asset

We assure a safe and congenial work environment for our staff. We are taking care of our team and their families. Work ethics are inspired by professionalism,



Environment Friendly

We ensure to use only the products which are eco-friendly, which do not make any disturbances to human beings or environment. No hazardous chemicals are there in our products. We maintain a well and effective ETP system. We are certified STANDARD 100 by OEKO-TEX®, Appendix 6, product class I, GRS, ICS.

OUR STRENGTH

A spirit: That unites, strengthen and guide us always, it is the spirit of Simtex Industries Limited for taking our company towards more heights. Our strengths are:

- We ensure International Standard Quality in all our products
- We ensure effective color management system
- We have a world class laboratory with technically qualified and experienced team
- We are equipped with most modern machinery for production of Sewing Thread
- We have our R&D department who are constantly engaged in development & diversification of our products to cater market needs
- Adequate production capacities to serve the market with competitive price and best possible lead time
- Efficient after sales service to our business partners



Spectro Photometer



Robotic Pipetting Machine - Korea



FADIS - Italy



SSM - Switzerland

DIRECTORS & SPONSORS



Mr. Md. Hafizur Rahman



Mr. Neaz Rahman Shaqib



Mr. Md Siddiqur Rahman
MBA, FCS



Mr. Md. Abdul Haque Sarder
FCS, FCA



Mr. A. T. M. Sarwar Kamal



Mr. Ayub Ali

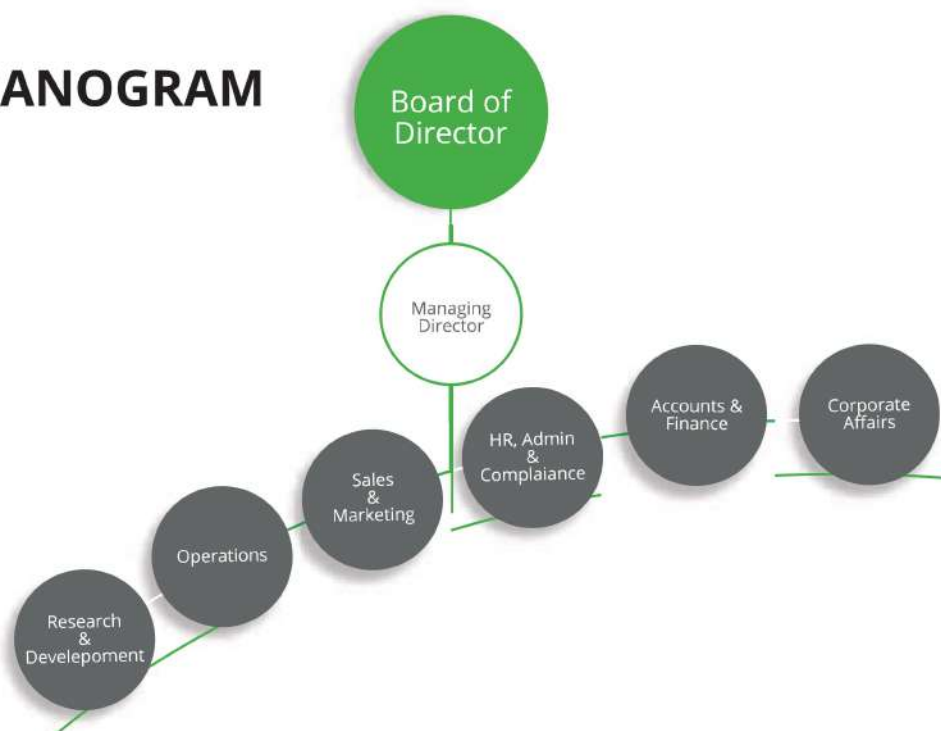


Mr. Md. Hafizur Rahman



Prof. Mohammed Enamul Hye
FCS

ORGANOGRAM



COMPANY MANAGEMENT

We have built our organization culture around the framework of a technically sound great team. We maintain the Corporate Governance in execution of activities by the management. The company has been setup by a group of highly educated, dedicated and well-experienced Bangladeshi entrepreneurs, who have excellent track record of industrial management. We have qualified foreign experts in our Operations, International Sales, Branding and New Product Development.



KEY PERSONNEL

Mr. Md. Hafizur Rahman
Acting Chairman

Mr. Neaz Rahman Shaqib
Managing Director

Mr. M A Shahjahan
Finance Advisor

Mr. Md. Hafizur Rahman
Director

Mr. Ayub Ali
Director

Mr. Md. Abdul Haque Sarder FCS, FCA
Independent Director

Mr. A. T. M. Sarrowar Kamal Chowdhury
Independent Director

Professor Mohammed Enamul Hye, FCS
Independent Director

Mr. Srinivasa Rao Talluri
Sr. GM, Operation

Mr. Ashis Kumar Saha
GM, HR & Admin

Mr. Md. Naim UI Karim Khan
GM, Sales & Marketing

Mr. Amal Krishna Das
GM, Technical

ABM Obaidul Bari
GM, Business Development

Mr. Saikh Bin Adedin
Company Secretary



OUR PRODUCTS

Simtex is well-known as one of the country's Largest Industrial Sewing Thread Manufacturers, while keeping pace with latest world trends so we can offer our customers the best expertise in the field. Our products are:

MAJOR PRODUCTS

Spun Polyester

Poly Poly Core Spun

Textured Polyester

Water Soluble Thread

Continuous Filament Polyester (C.F.P)

Continuous Filament Nylon

RFD Cotton

Cotton Raw White

Textured Nylon

Recycle Thread

OUR PRODUCTS

SPUN POLYESTER

SIL SPUN, or otherwise known as Spun Polyester (SSP), is made by spinning 100% polyester fibers into yarns. The threads are available in:

60/2, 60/3, 52/2, 50/2, 45/2, 44/2, 40/2, 40/3, 30/2, 30/3, 24/2, 24/3, 22/2, 20/2, 20/3, 20/4, 20/6, 20/9, 16/3, 12/3 counts.



Key Benefits

- Very high suppleness
- Natural aspects
- Micro molecular lubrication for very smooth high-speed sewing operation
- High resistance to ultra violet radiation
- Low shrinkage
- Very High Colour Fastness

Applications

- Shirts, light garments, hosiery
- Used in everything from women's lingerie to heavy leather gloves
- Trousers, suits, sleeping bags, denims

OUR PRODUCTS



POLY POLY CORE SPUN

PPC threads are made by wrapping a staple polyester or cotton wrapper around a continuous filament bundle of polyester fibers during spinning, and then plying these yarns into a sewing thread. The continuous filament polyester core makes up approximately 60% of the thread construction. PPC is available in 45/2, 40/2, 20/2, 20/3, 20/4 counts.

Key Benefits

- Strength & high tenacity Polyester Filament and softness of polyester fibre on the seams
- Good thermal resistance
- No problem of melting of threads on high speed machines
- Very high resistance of seam to abrasion
- High productivity due to excellent performance on sewing machine due to specially formulated micro molecular lubrication

Applications

- Button hole stitching, ultra-thin overlock, blind stitch sewing
- Elasticating, high grade trimming, jeans, blazers
- Fine blouses that are susceptible to seam puckering, denim products that will be stone-washed or sand blasted

OUR PRODUCTS

TEXTURED POLYESTER

A group of polymers that consist basically of repeated units of an ester and are used especially in making fibers or plastics. Filament fibers can be monofilament, which is a single fiber, or they can be twisted together to form multifilament yarns. Textured threads (TXP) are made of high quality polyester filament by special process giving textured surface which improves cooling of the thread, thread reducing the risk of fiber fusing. This product has the advantage of producing color that is resistant to stretching, friction and chemicals. Threads are available in 150D(SET), 150D(N), 150D(TPM).



Key Benefits

- Economical
- Excellence seam coverage with lesser thread
- Seaming of light weight fabrics
- Good seam strength and color life after repeated laundering ensures maximum durability
- High-speed multi-directional sewing
- High abrasion resistance
- Allows the use of smaller diameter thread to minimize Seam Puckering or Needle cutting

Applications

- T-shirt, fleece and under garments.
- Used for towel, pillow cases and swim suits
- Over seaming and cover seaming for hosiery garments

OUR PRODUCTS

WATER SOLUBLE THREAD

Water soluble thread/PVA (Magic thread) is a terrific product for various purposes such as machine and hand basting, trap unto, appliqué, and heirloom sewing. Threads are available in 40/2 (20 Degree)



Key Benefits

- Strength with transparency
- Strength without sheen
- Avoid the frustration of removing basting stitches
- Time saver
- Dissolves in wash, not in dry cleaning

Applications

- Used only with Fabrics which doesn't harm by water

OUR PRODUCTS

WHITE LION CFP

Lorem ipsum dolor sit amet, consectetur adipiscing elit, sed diam nonummy nibh euismod tincidunt ut



Key Benefits

- Economical
- Excellence seam coverage with lesser thread
- Seaming of light weight fabrics
- Good seam strength and color life after repeated laundering ensures maximum durability
- High-speed multi-directional sewing
- High abrasion resistance
- Allows the use of smaller diameter thread to minimize Seam Puckering or Needle cutting

Applications

- T-shirt, fleece and under garments.
- Used for towel, pillow cases and swim suits
- Over seaming and cover seaming for hosiery garments

OUR PRODUCTS

TEXTURED POLYESTER

A group of polymers that consist basically of repeated units of an ester and are used especially in making fibers or plastics. Filament fibers can be monofilament, which is a single fiber, or they can be twisted together to form multifilament yarns. Textured threads (TXP) are made of high quality polyester filament by special process giving textured surface which improves cooling of the thread, thread reducing the risk of fiber fusing. This product has the advantage of producing color that is resistant to stretching, friction and chemicals. Threads are available in 150D(SET), 150D(N), 150D(TPM).



Key Benefits

- Economical
- Excellence seam coverage with lesser thread
- Seaming of light weight fabrics
- Good seam strength and color life after repeated laundering ensures maximum durability
- High-speed multi-directional sewing
- High abrasion resistance
- Allows the use of smaller diameter thread to minimize Seam Puckering or Needle cutting

Applications

- T-shirt, fleece and under garments.
- Used for towel, pillow cases and swim suits
- Over seaming and cover seaming for hosiery garments

OUR PRODUCTS

TEXTURED POLYESTER

A group of polymers that consist basically of repeated units of an ester and are used especially in making fibers or plastics. Filament fibers can be monofilament, which is a single fiber, or they can be twisted together to form multifilament yarns. Textured threads (TXP) are made of high quality polyester filament by special process giving textured surface which improves cooling of the thread, thread reducing the risk of fiber fusing. This product has the advantage of producing color that is resistant to stretching, friction and chemicals. Threads are available in 150D(SET), 150D(N), 150D(TPM).



Key Benefits

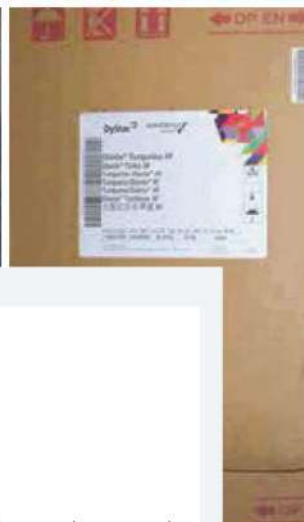
- Economical
- Excellence seam coverage with lesser thread
- Seaming of light weight fabrics
- Good seam strength and color life after repeated laundering ensures maximum durability
- High-speed multi-directional sewing
- High abrasion resistance
- Allows the use of smaller diameter thread to minimize Seam Puckering or Needle cutting

Applications

- T-shirt, fleece and under garments.
- Used for towel, pillow cases and swim suits
- Over seaming and cover seaming for hosiery garments

THREAD SPECIFICATION

Construction	Count(Ne)	Ticket No	Tex Size	Length(m)	Avg.Strength (lbs)	Avg.Strength (gms)	Avg.Strength (cN)	Elongation %	Ndl.Sz Min sz.
SSP	60/2	180	T-18	4000	1.46	661	648	12-17	70/10
	60/3	120	T-27	2500	2.15	975	956	13-18	75/10
	52/2	120	T-24	4000	1.76	800	786	13-18	75/10
	50/2	130	T-24	4000	1.87	846	829	13-18	70/10
	45/2	120	T-27	4000	2.10	950	931	13-18	75/10
	44/2	120	T-27	4000	2.02	918	900	13-18	75/110
	40/2	110	T-30	4000	2.48	1122	1100	13-19	75/10
	40/3	75	T-45	3000	3.79	1718	1684	13-22	90/14
	30/2	75	T-40	3000	3.19	1448	1420	13-22	90/15
	30/3	50	T-60	2500	5.15	2332	2286	13-22	110/18
	24/2	70	T-50	3000	3.64	1650	1617	13-22	110/18
	24/3	30	T-75	2000	5.63	2550	2500	13-24	120/20
	22/2	50	T-60	3000	4.61	2090	2050	13-22	110/1
	20/2	50	T-60	3000	4.95	2242	2198	13-24	110/18
	20/3	30	T-90	2000	7.84	3550	3480	13-24	120/20
	20/4	25	T-120	1500	10.25	4645	4554	16-24	130/21
	20/6	15	T-180	1000	16.31	7387	7242	16-24	160/23
	20/9	10	T-270	500	22.17	10043	9846	16-24	200/25
	16/3	28	T-105	2000	8.98	4066	3986	13-24	140/22
	12/3	20	T-150	1500	11.79	5339	5234	13-24	140/22
PPC	45/2	120	T-27	4000	2.59	1173	1150	14-22	75/11
	40/2	110	T-30	4000	3.11	1408	1380	14-22	80/12
	20/2	50	T-60	3000	6.75	3060	3000	14-27	100/16
	20/3	30	T-90	2000	10.13	4590	4500	14-24	100/16
	20/4	25	T-120	1500	13.24	5996	5878	14-27	110/18
TXP	150D(TPM)	180	T-18	4000	1.50	677	664	18-27	60/8
	150D(IN)	180	T-18	4000	1.42	642	629	18-27	60/8
	150D(SET)	180	T-18	4000	1.30	590	578	18-27	60/8
PVA	40/2	110	T-30	1500	1.41	640	627	12-21	75/11
CFP	150DX3	60	T-50	1000	6.75	3060	3000	14-27	110/18
CFN	150DX3	60	T-50	1000	7.47	3387	3321	20-28	110/18
RCY	40/2	110	T-30	4000	2.02	918	900	13-19	75/10



PRODUCTS' RAW MATERIALS

"Quality it is what is sought after, products and services follow."

A deciding factor which gives us an edge is our commitment to high performance, quality products and service provider at optimal cost. Mentioned standard is possible only when the best possible raw materials of the world are used. To achieve optimum quality, SIL uses best quality thread imported from China, dyes from Turkey and chemical from China under our direct supervision. Raw materials are collected from the same premium sources for maintaining the consistency in terms of quality. Further, to turn the raw materials in to a product, we use required dyes and chemicals from suppliers those are renowned for their commitment towards society and environment such as CLARIANT and BASF. Our products are Azo-Free and meet all other human and ecological requirements considered as Textile benchmarks certified by OEKO-TEX®, STANDARD 100 with classification as OEKO-TEX®, STANDARD 100, Appendix 6, product class1.

OUR CO PRODUCTS

We produce plastic bobbins inside our factory through the Injection Molding Machines. In order to maintain highest level of quality and on time delivery.



Injection Molding Machine for Plastic Bobbin



Plastic Bobbin

PRODUCTION PROCESS

We have setup a very sophisticated and high-speed machineries to ensure smooth and efficient quality based production. We assure quality in every step of our process. Our production process is illustrated below:



Soft Winding, FADIS - Italy



Dyeing, GO-FRONT - China



Cone Winding, SSM - Switzerland



WORLD CLASS LABORATORY

A great product is defined by even a greater finish, to deliver fine quality; you require a thread that enhances the product's look and endurance. At SIL thread is manufactured by using automatic dispensing machine as well as automatic solution maker with high accuracy to sustain the quality.

At SIL, the shade development done by the Spectro Meter for more accuracy in development stage and post dying products. The evaluation of dyes and dyed samples evaluation on screening and selection of dyes done through Spectro Meter to reduce the metamerism in shades/colors.

At SIL thread is manufactured conforming to stringent International Standards. Yarns are put through closely monitored process to determine desired strengths, colors and compatibility leading up to creating a masterpiece.

A series of double checks are conducted to ensure elimination of flaws at any point of production before the final approval given for readiness for delivery. The approval of final "application" test of the finished thread on the specified surface certifies the thread readiness for delivery.

To ensure the quality of our products as mentioned above in our own premises, we have a very impressive well-equipped laboratory which is run by well trained professionals.

MACHINERY

SIL is using latest technology-based machinery like FADIS from Italy, which are precision soft winding machine for keeping the uniform density, FONGS and GOFRONT machines from China for Yarn Dyeing, Dettin Hydro extractor for reducing the hairiness and STALAM, Radio Frequency Dryer from Italy for minimizing the dry time to support the customers by giving quicker deliveries.



Data color- is essential for better color matching of Sewing Thread that can make fashion world colorful. All of our shades are passed by visual and by the Spectro Photometer from USA to avoid the deviation in the shades from standard/batch.

SSM machine from Switzerland are there to achieve high speed cone winding, accuracy in length, uniformity in lubrication throughout the cone for preventing breakages while sewing and attain optimum garment stitching.

In short, with above mentioned modern machineries we are confident to support with quality products to our customers.

R&D

R&D is behind the innovation and the driver of constant evolution at SIL. Our R&D team gives continuous emphasis on product development, technology upgradation and adaptation, and substitution has resulted in development and diversification of our products. This has enabled us to establish technologically advancement and create impact to open up new market.

SERVICES

Communication and Efficient Response

We keep very close relationship with our customers. According to their request, we deliver different product and services through regular follow up.

Product Variety

Our range of products in respect to sewing thread adequately wide that helps our customers depend on one source without going door-to-door for sourcing.

AROUND THE GLOBE

Since recent past we have been exploring markets for our products abroad availing comparative advantage in line with RMG sector of our country and in the meantime made break-through and set our foot in Middle-East, Turkey & Africa. In the coming days we hope to ship big chunk of our products to abroad.



ADVANTAGES

Location

Our factory is located very near to Dhaka Capital City of Bangladesh, 17 km West of Hazrat Shahjalal International Airport with excellent road communication. Our Corporate Office, Simtex Center is also having excellent communication network situated at Sector – 7, Uttara, Dhaka.



Infrastructure

We have a very well planned and modern infrastructural designed plant with all possible required resources. Our spacious factory has made it possible to have a very well-ventilated work environment for our workers.



Outlook of our Factory Premises
Under Renovation



Corporate Office
SIMTEX CENTER

Distribution

We have our own distribution base having sufficient number of delivery vans to supply our clients with our products within the shortest possible time.



Utility Facility



Power

We are self-sufficient with our own Power Supply. For ensuring an uninterrupted power supply, we have installed two Waukesha gas generators producing 2000KVA and one Perkins diesel operated generator producing 500KVA. As an alternative, we are also supported by Rural Electrification Board (REB).



Steam Boiler

We are using fully automatic natural gas fired boiler for efficient operation. The boilers are originated from USA and South Korea with the capability of controlling the environmental pollution as well as ensure safety.



WTP

We are maintaining the standard purity and hardness of the water by using iron free soft water below 2 ppm hardness. We have our own Treatment Plant with capacity of 130 m³ / hr to ensure constant supply of iron free soft water.



ETP

ETP for managing Waste there are three mechanisms for treatment, e.g. physical, chemical and Biological. These mechanisms are used together in a single Effluent Treatment Plant with a capacity of 40m³/hr

Sludge Management

We have a total of seven sludge sheds to make sure that all our industrial waste is well managed. We value our goal towards keeping a sound environment around our work place by setting up an Effluent Treatment Plant and a Water Treatment Plant. We also put sufficient effort in our waste disposal management system.



COMMON PRACTICES RELATED TO EMPLOYEE WELFARE

We are very serious about our responsibilities towards our employees and the society as a whole. Employees make our company, they are our greatest asset. What makes them special is their dedicated efforts that has helped us to reach where we are.

Our constant endeavor to provide a safe and comfortable working environment, a culture which instills respect for people and concern for their welfare, and a strong focus on their training and development of career, the confidence and trust of our people. To stay on top of our duties within the facility, we follow the following common practices:

- Minimum Satisfactory Wages
- Voluntary Overtime Facility
- Holiday and Leave Facility
- Hygiene and Sanitation Facility
- First Aid Facility



Training Session for Sales & Marketing Team



Presenting the Cheque to Our College who is going to get married.



Employee Performance Award



Annual Picnic Sports Prize



Annual Picnic



Iftar Mahfil

Remembrance





Factory, Registered Office and Share Office:

Khagan, Birulia (Ashulia), Savar, Dhaka-1341, Bangladesh.

Hotline: +88 01759 666 333, Fax: +88-02-8932237

E-mail: info@simtexgroup.com, Web: www.simtexgroup.com