



# COMPANY PROFILE

## Simtex Industries Limited

Largest Bangladeshi Sewing Thread Manufacturer  
[www.simtexgroup.com](http://www.simtexgroup.com)

# Achievement



Ms. Hafiza Khanam, Directors of Simtex Industries Limited receiving Trophy from the Respected President of the Federation of Bangladesh Chambers of Commerce and Industry (FBCCI) Mr. Sheikh Fazle Fahim on being awarded 'BGAPMEA Export Trophy-2019' in the Large Category.



# Achievement



Mr. Neaz Rahman Shaqib, Managing Director of Simtex Industries Limited receiving BGAPMEA Export Trophy-2021 from Respected President of BGAPMEA Mr. Mohammad Moazzem Hossain Moti & Information Minister Hasan Mahmud.

**Monitoring summary report for Simtex Industries Limited**  
**MONITORING ID: 22-0150303-1**

**amfori**  
*Trade with purpose*

|   |  |   |
|---|--|---|
| Monitored Party<br><b>Simtex Industries Limited</b>               | amfori ID<br><b>050-000734-000</b>                 | Address<br><b>Khagan, Birulia, Savar, 1341 Dhaka, Dhaka, Bangladesh</b> |
| Monitoring Activity<br><b>amfori Social Audit - Manufacturing</b> | Monitoring Type<br><b>Follow-up Monitoring</b>     | Monitoring Partner<br><b>TUV Rheinland</b>                              |
| Monitoring Start Date<br><b>13/11/2023</b>                        | Closing Meeting Finished Date<br><b>13/11/2023</b> | Submission Date<br><b>20/11/2023</b>                                    |
| Expiration Date<br><b>27/12/2024</b>                              | Announcement Type<br><b>Fully Unannounced</b>      |   |
| Site<br><b>Simtex Industries Limited</b>                          | Site amfori ID<br><b>050-000734-002</b>            |   |

This is an extract of the online Monitoring Result, generated on 20/11/2023, and is only valid as an acknowledgement of the result. To see all the details, review the full monitoring result, which is available on the [amfori Sustainability Platform](#) - The English version is the legally binding one.

amfori does not assume any liability with regard to the compliance of this extract, or any versions of this extract, with the Regulation (EU) 2016/679 (General Data Protection Regulation).

All rights reserved. No part of this publication may be reproduced, translated, stored in a retrieval system, or transmitted, in any form or by any means, electronic, mechanical, photocopying, recording or otherwise, for sale, in whole, in part, or in any other way without the written consent of amfori, 2023.

**OVERALL RATING**

A B C D E None

**SECTION RATING**

|  |   |
|--|---|
| PA1: Social Management System  | C |
| PA 2: Workers Involvement and Protection                             | A |
| PA 3: The Rights of Freedom of Association and Collective Bargaining | A |
| PA 4: No Discrimination  | A |
| PA 5: Fair Remuneration  | B |
| PA 6: Decent Working Hours   | A |
| PA 7: Occupational Health and Safety                                 | A |

MONITORING ID: 22-0150303-1 | Monitoring summary report for Simtex Industries Limited — 1 / 11

GSCS International Ltd.  
 Rokeya Palace, House 75, Road 19, Sector 11, Uttara, Dhaka-1230, Bangladesh  
 Tel: +88 02 5508 6965; info@gcsbd.com, Web: www.gcsintl.com

**Scope Certificate**  
**Scope Certificate Number GSS-GRS-20210673**  
 GSCS International Ltd. certifies that

**Simtex Industries Limited**  
 License Number TE-20200056

Khagan, Birulia Savar, 1341, Dhaka, BD-C, Bangladesh, BD has been audited and found to be in conformity with the

**Global Recycled Standard (GRS) (Version 4.0)**

Product categories mentioned below (and further specified in the product appendix) conform with the standard(s):  
 Functional accessories (PC0017)

Process categories carried out under responsibility of the above mentioned organization for the certified products cover:  
 Warehousing, distribution (PR0031), Preparatory (PR0022), Dyeing (PR0008), Finishing (PR0012), Packing (PR0020), Trading (PR0030)

\*The processes marked with an asterisk may be carried out by subcontractors.

This Certificate is valid until: 2024-08-29  
 Audit criteria: Global Recycled Standard (GRS) 4.0; Content Claim Standard V3.1; Textile Exchange Standards Claims Policy V1.1

Place and Date of Issue  
 Dhaka, 2023-08-29  
 Last Updated: 2023-08-29

Certification Body  
 Standard

Name of the Authorized Person  
 Abdul Motaleb

Certification Body Licensed by: Textile Exchange; Licensing Code: CB-033  
 Certification Body Accredited by: GACS Inc.; Accreditation Number: 194  
 Inspection Body: GSCS International Ltd.  
 Auditor(s): N/A

This scope certificate provides no proof that any goods delivered by its holder are Global Recycled Standard (GRS) 4.0 certified. Proof of Global Recycled Standard (GRS) 4.0 certification of goods delivered is provided by a valid transaction certificate (TC) or equivalent covering them.  
 The issuing body may withdraw this certificate before it expires if the declared conformity is no longer guaranteed.  
 To authenticate this certificate, please visit [www.TextileExchange.org](http://www.TextileExchange.org)

This electronically issued document is the valid original version  
 License No. TE-20200056

Page 1 of 3

# Index

|   |  |    |
|---|--|----|
| ▶ | Corporate Profile  | 2  |
| ▶ | Managing Director's Message  | 3  |
| ▶ | Tracing History  | 4  |
| ▶ | Vision & Mission   | 5  |
| ▶ | Our Values   | 6  |
| ▶ | Our Strength   | 7  |
| ▶ | Directors & Sponsors<br>Organogram   | 8  |
| ▶ | Company Management   | 9  |
|   | Management & Entrepreneurs<br>Sales & Marketing                                |    |
|   | Production & Quality Assurance<br>Accounts & Finance<br>HR, Admin & Compliance |    |
| ▶ | Our Products   | 12 |
|   | Spun Polyester<br>Poly Poly Core Spun<br>Textured Polyester                    |    |
|   | Water Soluble Thread<br>Thread Specification                                   |    |
| ▶ | Products' Raw Materials<br>Our Co Products                                     | 18 |
| ▶ | Production Process   | 19 |
| ▶ | World Class Laboratory   | 20 |
| ▶ | Machinery  | 21 |
| ▶ | R&D<br>Services<br>Around the Globe  | 22 |
| ▶ | Advantages   | 23 |
|   | Location<br>Infrastructure   |    |
|   | Distribution<br>Utility Facilities   |    |
| ▶ | Common Practices Related to Employee Welfare                                   | 25 |
| ▶ | In Short   | 27 |
| ▶ | Remembrance  | 28 |

# CORPORATE PROFILE

|                             |   |
|-----------------------------|---|
| <b>Name of the Company</b>  | <b>Simtex Industries Limited</b>  |
| <b>Legal Status</b>         | A public Company limited by shares, registered under Companies Act, 1994  |
| <b>Incorporation Number</b> | C-67047 (4539)/2007   |
| <b>Registered Office</b>    | Khagan, Birulia, Savar, Dhaka-1341, Bangladesh  |
| <b>Corporate Office</b>     | <b>SIMTEX CENTER</b> 1/A Sonargaon Janapath, Uttara, Dhaka-1230, Bangladesh   |
| <b>Factory Location</b>     | Khagan, Birulia, Savar, Dhaka-1341, Bangladesh  |
| <b>Nature of Business</b>   | Manufacturer of Sewing Thread   |
| <b>Production Capacity</b>  | Approx. 3.6 - 4.8 Million Cones per month   |
| <b>Authorized Capital</b>   | BDT 1,000 Million   |
| <b>Paid Up Capital</b>      | BDT 659.175 Million   |
| <b>Approval for IPO</b>     | July 23, 2015   |
| <b>Listed with</b>          | Dhaka Stock Exchange Limited and Chittagong Stock Exchange Limited  |
| <b>Bankers</b>              | <ul style="list-style-type: none"> <li>Trust Bank Limited, Millennium Corporate Branch, Dhaka-1000</li> <li>South East Bank Limited, Principal Branch, Motijheel, Dhaka-1000</li> </ul>   |
| <b>Auditors</b>             | Pinaki & Company, Chartered Accountants<br>2/A AHSANDELL, Mymensingh Road (2 <sup>nd</sup> Floor) Shahbag, Dhaka-1000   |
| <b>Tax Consultants</b>      | Mandal & Company, Chartered Accountants<br>Eastern Mansion (10 <sup>th</sup> floor), 67/9, Kakrail, Dhaka-1000  |
| <b>Credit Rating</b>        | Long Term (A), Short Term (ST-3)  |
| <b>Credit Rating Agency</b> | Credit Rating Information and Services Limited (CRISL)<br>Nakshi Homes (1 <sup>st</sup> , 4 <sup>th</sup> & 5 <sup>th</sup> Floor) 6/1/a Segun Bagicha Dhaka -1000  |
| <b>Certification</b>        | STANDARD 100 by OEKO-TEX®, Appendix 6, Class I (Certified)  |
| <b>Insurer</b>              | <ul style="list-style-type: none"> <li>Nitol Insurance Company Limited</li> <li>Rupali Insurance Company Limited</li> </ul>   |
| <b>Members</b>              | <ul style="list-style-type: none"> <li>Dhaka Chamber of Commerce &amp; Industry (DCCI)</li> <li>India-Bangladesh Chamber of Commerce &amp; Industry (IBCCI)</li> <li>Bangladesh Sewing Thread Manufacturers &amp; Exporters Association (BSTMEA)</li> <li>Bangladesh Textile Mills Association (BTMA)</li> <li>Bangladesh Garments Accessories &amp; Packaging Manufacturers &amp; Exporters Association (BGAPMEA)</li> </ul> |
| <b>Contact Numbers</b>      | Telephone: +880 2 89171103 - 4, +880 2 7914035<br>Hotline: +880 1713444424, Fax: +880 2 8932237   |
| <b>Email</b>                | info@simtexgroup.com  |
| <b>Website</b>              | <b>www.simtexgroup.com</b>  |



## MANAGING DIRECTOR'S MESSAGE

Simtex started its visionary journey with the mission to provide New Generation Sewing Solution to the RMG sector. Since its inception in year 2000, our vision is to mature as a sustainable, coherent organization offering quality products to the customers, employment opportunity to the society and significant contribution to the GDP of the country. Our relentless effort is to raise our competitiveness to the highest level and exceed customer expectation based on building long-term relationship with commitment for international standard quality, competitive price and efficient service.

We envisage growing further by continuous investment for both modernization and expansion to stand up as Largest and best Bangladeshi Sewing Thread Manufacturer with the continued support of customers, associates, stakeholders and employees.

The scope of this Company Profile encompasses brief history of the company, our vision, our mission, our beliefs, our products, our technical infrastructure, our production process and production capacity, utilities and our common practices regarding the employee welfare.



## TRACING HISTORY

### A Journey with Many Milestones

#### The Roots

The Simtex Industries Limited (SIL) started its journey in 2000 with a small infrastructural facility at Mirpur, Dhaka, Bangladesh with the vision to bring revolution in Sewing Thread business. Since its launch SIL has grown to become country's leading Sewing Thread manufacturer with increased production capacity to capture major market share. SIL moved to its present plant in 2009 located at Khagan, Birulia, Savar with more sophisticated and modern facilities and started commercial production in the same year.

SIL was incorporated with the registrar of Joint Stock Companies and Firms (RJSC) as a Private Limited Company initially and was converted to Public Limited Company later on November 15, 2012 under the Companies Act, 1994. The company floated its share to the public through IPO with 100% Premium on Jul 2015 to strengthen its financial backbone and was listed with Dhaka Stock Exchange Limited (DSE) and Chittagong Stock Exchange Limited (CSE).



## The Evolution

SIL continued its extensive range of modernization of its plants and upgrading its products to international standard. At present, we are having World famous most modern machineries, technically innovative lab and well trained efficient human resources. Currently we are having production capacity of 15-20 MT per day/3.6 - 4.8 million cones per month, ensuring international standard quality and minimum lead time in the industry.

## Recognition

In recognition of our contribution to the RMG Sector, we have been awarded **BGAPMEA Export Trophy - 2017 in Large Category** in its first ever held presentation ceremony.



## VISION

To become the market leader of the thread industry in this decade through high productivity, acquiring advanced technology and absolute customer satisfaction by leveraging on the strengths of our well experienced professionals.



## MISSION

To meet up market needs through a closer working relationship with our Business Partners, efficient manufacturing process and maintaining efficient customer service.



# OUR VALUES

## Define our Actions

Our aim is not only commercial success but also to be a leader in Sewing Thread market and holistically growing in every way possible. Our values:



### Customers Satisfaction

Our customers are the reason for what we are today. It is therefore, our constant endeavor just not to meet their expectation, but to ensure customers' delight.



### Excellence in Quality Production

We strive to be the best in everything we do for ensuring quality production and timely delivery to the customers. We are not only developing innovative products but also ensuring International Standard, which make the difference.



### Integrity

We are sincere and honest in what we do. We believe that business is not just a deal, we are looking forward for a good and long-term relationship.



### Innovation

We aspire to develop new products for fulfilling the requirement of our customers. At the same time, we improve our existing products to higher standards for better customers' delight.



### People: Our Greatest Asset

We assure a safe and congenial work environment for our staff. We are taking care of our team and their families. Work ethics are inspired by professionalism, initiative and team work.



### Environment Friendly

We ensure to use only the products which are eco-friendly, which do not make any disturbances to human beings or environment. No hazardous chemicals are there in our products. We maintain a well and effective ETP system. We are certified STANDARD 100 by OEKO-TEX®, Appendix 6, product class I.

## OUR STRENGTH

A spirit: That unites, strengthen and guide us always, it is the spirit of Simtex Industries Limited for taking our company towards more heights. Our strengths are:

- We ensure International Standard Quality in all our products
- We ensure effective color management system
- We have a world class laboratory with technically qualified and experienced team
- We are equipped with most modern machinery for production of Sewing Thread
- We have our R&D department who are constantly engaged in development & diversification of our products to cater market needs
- Adequate production capacities to serve the market with competitive price and best possible lead time
- Efficient after sales service to our business partners



Spectro Photometer



Robotic Pipetting Machine - Korea



FADIS - Italy



SSM - Switzerland

## DIRECTORS & SPONSORS



Major General (Retd) Dr. Md Sarwar Hossain



Mr. Md. Ensan Ali Sheikh



Mr. Md Siddiqur Rahman  
MBA, FCS



Mr. Neaz Rahman Shaqib



Mr. Md Zahangir Alam  
MCom, FCS



Ms. Hafiza Khanam  
MA, LLB

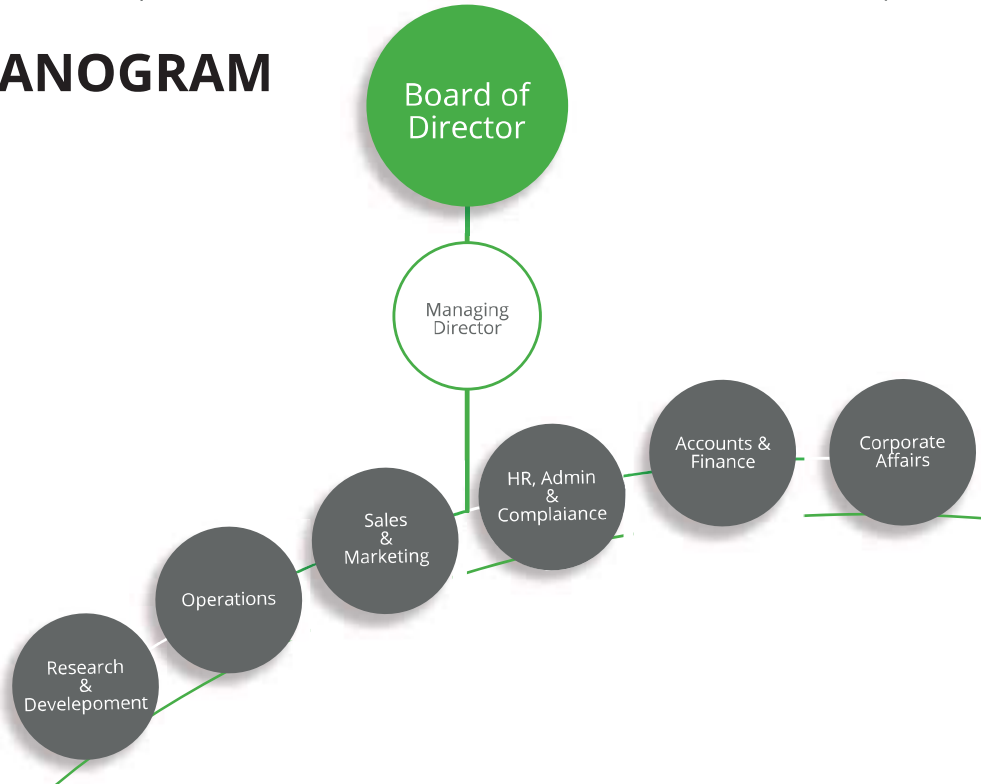


Mr. Md. Akram Hossain



Mr. Md Shafiquzzaman  
MA (Economics)

## ORGANOGRAM



## COMPANY MANAGEMENT

We have built our organization culture around the framework of a technically sound great team. We maintain the Corporate Governance in execution of activities by the management. The company has been setup by a group of highly educated, dedicated and well-experienced Bangladeshi entrepreneurs, who have excellent track record of industrial management. We have qualified foreign experts in our Operations, International Sales, Branding and New Product Development.



### KEY PERSONNEL

Major General (Retd) Dr. Md Sarwar Hossain  
Chairman & Independent Director

Mr. Neaz Rahman Shaqib  
Managing Director

Mr. M A Shahjahan  
Finance Advisor

Mr. Md. Hafizur Rahman  
Director

Mr. Srinivasa Rao Talluri  
Sr. GM, Operation

Mr. Ashis Kumar Saha  
GM, Corporate Affairs

Mr. Md. Naim UI Karim Khan  
GM, Sales & Marketing

Mr. Amal Krishna Das  
GM, Technical

Mr. Saikh Bin Adedin  
Chief Financial Officer

Mr. Md. Shah Alam  
DGM, HR, Admin & Compliance

Mr. Md. Anisuzzaman  
AGM, Admin

Mr. Md. Modasserul Hasan  
AGM, Marketing



## OUR PRODUCTS

SIL is well-known as one of the country's Largest Industrial Sewing Thread Manufacturers, while keeping pace with latest world trends so we can offer our customers the best expertise in the field. Our products are:

### MAJOR PRODUCTS

Spun Polyester

Poly Poly Core Spun

Textured Polyester

Water Soluble Thread

Continuous Filament Polyester (C.F.P)

### UPCOMING PRODUCTS

Continuous Filament Nylon

RFD Cotton

Cotton Raw White

Textured Nylon

Recycle Thread

## OUR PRODUCTS

### SPUN POLYESTER

Spun Poly or otherwise known as Spun Polyester (SSP) is made by spinning 100% polyester fibers into yarns. The threads are available in 60/2, 60/3, 52/2, 50/2, 45/2, 44/2, 40/2, 40/3, 30/2, 30/3, 24/2, 24/3, 22/2, 20/2, 20/3, 20/4, 20/6, 20/9, 16/3, 12/3 counts.



#### Key Benefits

- Very high suppleness
- Natural aspects
- Micro molecular lubrication for very smooth high-speed sewing operation
- High resistance to ultra violet radiation
- Low Shrinkage

#### Applications

- Shirts, light garments, hosiery
- Used in everything from women's lingerie to heavy leather gloves
- Trousers, suits, sleeping bags, denims

## OUR PRODUCTS



### POLY POLY CORE SPUN

PPC threads are made by wrapping a staple polyester or cotton wrapper around a continuous filament bundle of polyester fibers during spinning, and then plying these yarns into a sewing thread. The continuous filament polyester core makes up approximately 60% of the thread construction. PPC is available in 45/2, 40/2, 20/2, 20/3, 20/4 counts.

#### Key Benefits

- Strength & high tenacity Polyester Filament
- Good thermal resistance
- No problem of melts of threads on high speed machines
- Very high resistance of sewing abrasion
- High productivity due to excellent performance on sewing machine due to specially formulated micro molecule lubrication

#### Applications

- Button hole stitching, ultra-thin overlock, blind stitch sewing
- Elasticating, high grade trimming, jeans, blazers
- Fine blouses that are susceptible to seam puckering, denim products that will be stone-washed or sand blasted

## OUR PRODUCTS

### TEXTURED POLYESTER

A group of polymers that consist basically of repeated units of an ester and are used especially in making fibers or plastics. Filament fibers can be monofilament, which is a single fiber, or they can be twisted together to form multifilament yarns. Textured threads (TXP) are made of high quality polyester filament by special process giving textured surface which improves cooling of the thread, thread reducing the risk of fiber fusing. This product has the advantage of producing color that is resistant to stretching, friction and chemicals. Threads are available in 150D(SET), 150D(IN), 150D(TPM).



#### Key Benefits

- Seaming of light weight fabrics
- Surging/over locking
- High-speed multi-directional sewing
- High abrasion resistance
- Allows the use of smaller diameter thread to minimize Seam Puckering or Needle cutting

#### Applications

- T-shirt, fleece and under garments
- Used for towel, pillow cases and swim suits
- Over seaming and cover seaming for hosiery garments



## OUR PRODUCTS

### WATER SOLUBLE THREAD

Water soluble thread/PVA (Magic thread) is a terrific product for various purposes such as machine and hand basting, trap unto, appliqué, and heirloom sewing. Threads are available in 40/2 (20 Degree)



#### Key Benefits

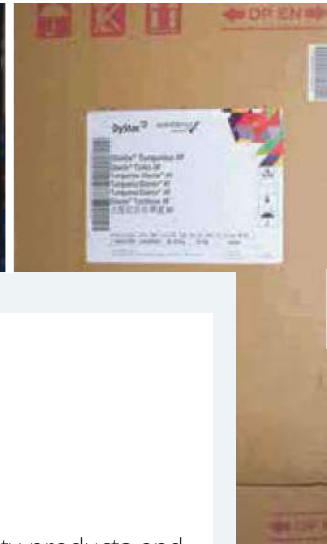
- Strength with transparency
- Strength without sheen
- Avoid the frustration of removing basting stitches
- Time saver
- Dissolves in wash, not in dry cleaning

#### Applications

- Used only with Fabrics which doesn't harm by water

# THREAD SPECIFICATION

| Construction | Count(Ne) | Ticket No | Tex Size | Length(m) | Avg.Strength (lbs) | Avg.Strength (gms) | Avg.Strength (cN) | Elongation % | Ndl.Sz Min sz. |
|--------------|-----------|-----------|----------|-----------|--------------------|--------------------|-------------------|--------------|----------------|
| <b>SSP</b>   | 60/2      | 180       | T-18     | 4000      | 1.46               | 661                | 648               | 12-17        | 70/10          |
|              | 60/3      | 120       | T-27     | 2500      | 2.15               | 975                | 956               | 13-18        | 75/10          |
|              | 52/2      | 120       | T-24     | 4000      | 1.76               | 800                | 786               | 13-18        | 75/10          |
|              | 50/2      | 130       | T-24     | 4000      | 1.87               | 846                | 829               | 13-18        | 70/10          |
|              | 45/2      | 120       | T-27     | 4000      | 2.10               | 950                | 931               | 13-18        | 75/10          |
|              | 44/2      | 120       | T-27     | 4000      | 2.02               | 918                | 900               | 13-18        | 75/110         |
|              | 40/2      | 110       | T-30     | 4000      | 2.48               | 1122               | 1100              | 13-19        | 75/10          |
|              | 40/3      | 75        | T-45     | 3000      | 3.79               | 1718               | 1684              | 13-22        | 90/14          |
|              | 30/2      | 75        | T-40     | 3000      | 3.19               | 1448               | 1420              | 13-22        | 90/15          |
|              | 30/3      | 50        | T-60     | 2500      | 5.15               | 2332               | 2286              | 13-22        | 110/18         |
|              | 24/2      | 70        | T-50     | 3000      | 3.64               | 1650               | 1617              | 13-22        | 110/18         |
|              | 24/3      | 30        | T-75     | 2000      | 5.63               | 2550               | 2500              | 13-24        | 120/20         |
|              | 22/2      | 50        | T-60     | 3000      | 4.61               | 2090               | 2050              | 13-22        | 110/1          |
|              | 20/2      | 50        | T-60     | 3000      | 4.95               | 2242               | 2198              | 13-24        | 110/18         |
|              | 20/3      | 30        | T-90     | 2000      | 7.84               | 3550               | 3480              | 13-24        | 120/20         |
|              | 20/4      | 25        | T-120    | 1500      | 10.25              | 4645               | 4554              | 16-24        | 130/21         |
|              | 20/6      | 15        | T-180    | 1000      | 16.31              | 7387               | 7242              | 16-24        | 160/23         |
|              | 20/9      | 10        | T-270    | 500       | 22.17              | 10043              | 9846              | 16-24        | 200/25         |
|              | 16/3      | 28        | T-105    | 2000      | 8.98               | 4066               | 3986              | 13-24        | 140/22         |
|              | 12/3      | 20        | T-150    | 1500      | 11.79              | 5339               | 5234              | 13-24        | 140/22         |
| <b>PPC</b>   | 45/2      | 120       | T-27     | 4000      | 2.59               | 1173               | 1150              | 14-22        | 75/11          |
|              | 40/2      | 110       | T-30     | 4000      | 3.11               | 1408               | 1380              | 14-22        | 80/12          |
|              | 20/2      | 50        | T-60     | 3000      | 6.75               | 3060               | 3000              | 14-27        | 100/16         |
|              | 20/3      | 30        | T-90     | 2000      | 10.13              | 4590               | 4500              | 14-24        | 100/16         |
|              | 20/4      | 25        | T-120    | 1500      | 13.24              | 5996               | 5878              | 14-27        | 110/18         |
| <b>TXP</b>   | 150D(TPM) | 180       | T-18     | 4000      | 1.50               | 677                | 664               | 18-27        | 60/8           |
|              | 150D(IN)  | 180       | T-18     | 4000      | 1.42               | 642                | 629               | 18-27        | 60/8           |
|              | 150D(SET) | 180       | T-18     | 4000      | 1.30               | 590                | 578               | 18-27        | 60/8           |
| <b>PVA</b>   | 40/2      | 110       | T-30     | 1500      | 1.41               | 640                | 627               | 12-21        | 75/11          |
| <b>CFP</b>   | 150DX3    | 60        | T-50     | 1000      | 6.75               | 3060               | 3000              | 14-27        | 110/18         |
| <b>CFN</b>   | 150DX3    | 60        | T-50     | 1000      | 7.47               | 3387               | 3321              | 20-28        | 110/18         |
| <b>RCY</b>   | 40/2      | 110       | T-30     | 4000      | 2.02               | 918                | 900               | 13-19        | 75/10          |



# PRODUCTS' RAW MATERIALS

**“Quality it is what is sought after, products and services follow.”**

A deciding factor which gives us an edge is our commitment to high performance, quality products and service provider at optimal cost. Mentioned standard is possible only when the best possible raw materials of the world are used. To achieve optimum quality, SIL uses best quality thread imported from China, dyes from Turkey and chemical from China under our direct supervision. Raw materials are collected from the same premium sources for maintaining the consistency in terms of quality. Further, to turn the raw materials in to a product, we use required dyes and chemicals from suppliers those are renowned for their commitment towards society and environment such as CLARIANT and BASF. Our products are Azo-Free and meet all other human and ecological requirements considered as Textile benchmarks certified by OEKO-TEX®, STANDARD 100 with classification as OEKO-TEX®, STANDARD 100, Appendix 6, product class1.

## OUR CO PRODUCTS

We produce plastic bobbins inside our factory through the Injection Molding Machines. In order to maintain highest level of quality and on time delivery.

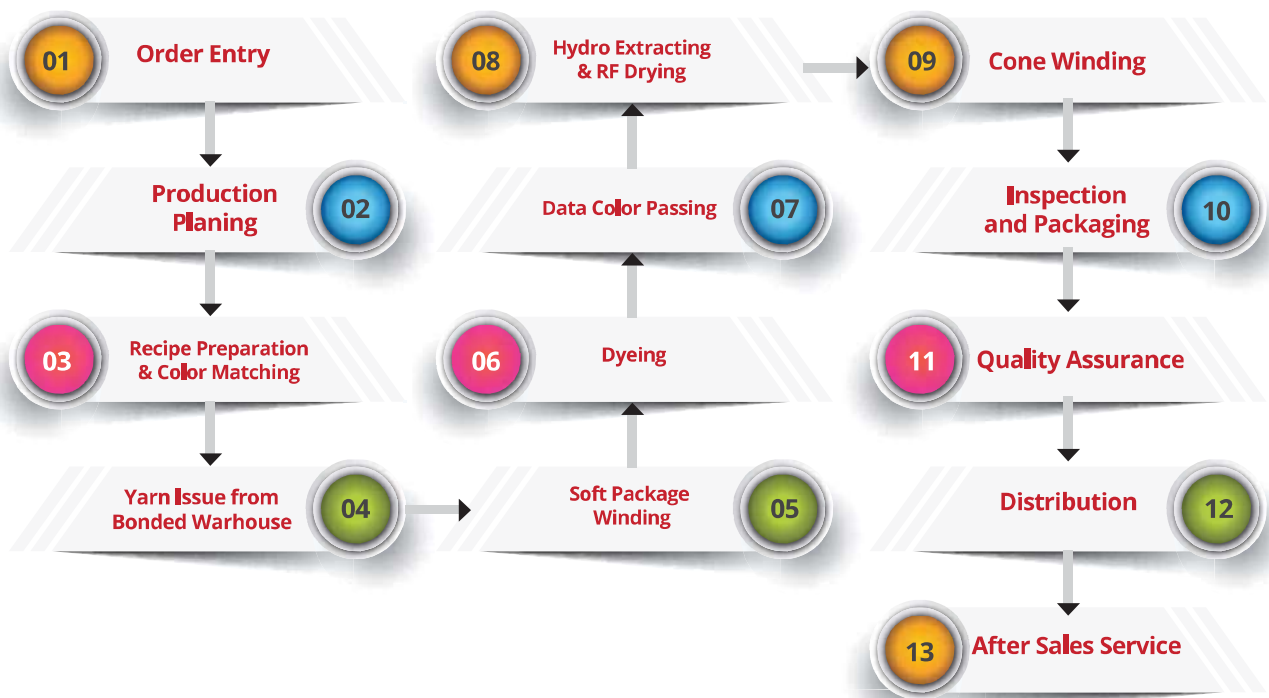


Injection Molding Machine for Plastic Bobbin

Plastic Bobbin

# PRODUCTION PROCESS

We have setup a very sophisticated and high-speed machineries to ensure smooth and efficient quality based production. We assure quality in every step of our process. Our production process is illustrated below:



Soft Winding, FADIS - Italy



Dyeing, GO-FRONT - China



Cone Winding, SSM - Switzerland



## WORLD CLASS LABORATORY

A great product is defined by even a greater finish, to deliver fine quality; you require a thread that enhances the product's look and endurance. At SIL thread is manufactured by using automatic dispensing machine as well as automatic solution maker with high accuracy to sustain the quality.

At SIL, the shade development done by the Spectro Meter for more accuracy in development stage and post dying products. The evaluation of dyes and dyed samples evaluation on screening and selection of dyes done through Spectro Meter to reduce the metamerism in shades/colors.

At SIL thread is manufactured conforming to stringent International Standards. Yarns are put through closely monitored process to determine desired strengths, colors and compatibility leading up to creating a masterpiece.

A series of double checks are conducted to ensure elimination of flaws at any point of production before the final approval given for readiness for delivery. The approval of final "application" test of the finished thread on the specified surface certifies the thread readiness for delivery.

To ensure the quality of our products as mentioned above in our own premises, we have a very impressive well-equipped laboratory which is run by well trained professionals.

## MACHINERY

SIL is using latest technology-based machinery like FADIS from Italy, which are precision soft winding machine for keeping the uniform density, FONGS and GOFRONT machines from China for Yarn Dyeing, Dettin Hydro extractor for reducing the hairiness and STALAM, Radio Frequency Dryer from Italy for minimizing the dry time to support the customers by giving quicker deliveries.



Data color- is essential for better color matching of Sewing Thread that can make fashion world colorful. All of our shades are passed by visual and by the Spectro Photometer from USA to avoid the deviation in the shades from standard/batch.

SSM machine from Switzerland are there to achieve high speed cone winding, accuracy in length, uniformity in lubrication throughout the cone for preventing breakages while sewing and attain optimum garment stitching.

In short, with above mentioned modern machineries we are confident to support with quality products to our customers.

## R&D

R&D is behind the innovation and the driver of constant evolution at SIL. Our R&D team gives continuous emphasis on product development, technology upgradation and adaptation, and substitution has resulted in development and diversification of our products. This has enabled us to establish technologically advancement and create impact to open up new market.

## SERVICES

### Communication and Efficient Response

We keep very close relationship with our customers. According to their request, we deliver different product and services through regular follow up.

### Product Variety

Our range of products in respect to sewing thread adequately wide that helps our customers depend on one source without going door-to-door for sourcing.

## AROUND THE GLOBE

Since recent past we have been exploring markets for our products abroad availing comparative advantage in line with RMG sector of our country and in the meantime made breakthrough and set our foot in Middle-East, Turkey & Africa. In the coming days we hope to ship big chunk of our products to abroad.



# ADVANTAGES

## Location

Our factory is located very near to Dhaka Capital City of Bangladesh, 17 km West of Hazrat Shahjalal International Airport with excellent road communication. Our Corporate Office, Simtex Center is also having excellent communication network situated at Sector – 7, Uttara, Dhaka.



## Infrastructure

We have a very well planned and modern infrastructural designed plant with all possible required resources. Our spacious factory has made it possible to have a very well-ventilated work environment for our workers.



Outlook of our Factory Premises  
*Under Renovation*



Corporate Office  
SIMTEX CENTER

## Distribution

We have our own distribution base having sufficient number of delivery vans to supply our clients with our products within the shortest possible time.





## Utility Facility



### Power

We are self-sufficient with our own Power Supply. For ensuring an uninterrupted power supply, we have installed two Waukesha gas generators producing 2000KVA and one Perkins diesel operated generator producing 500KVA. As an alternative, we are also supported by Rural Electrification Board (REB).



### Steam Boiler

We are using fully automatic natural gas fired boiler for efficient operation. The boilers are originated from USA and South Korea with the capability of controlling the environmental pollution as well as ensure safety.



### WTP

We are maintaining the standard purity and hardness of the water by using iron free soft water below 2 ppm hardness. We have our own Treatment Plant with capacity of 130 m<sup>3</sup> / hr to ensure constant supply of iron free soft water.



### ETP

ETP for managing Waste there are three mechanisms for treatment, e.g. physical, chemical and Biological. These mechanisms are used together in a single Effluent Treatment Plant with a capacity of 40m<sup>3</sup>/hr

## Sludge Management

We have a total of seven sludge sheds to make sure that all our industrial waste is well managed. We value our goal towards keeping a sound environment around our work place by setting up an Effluent Treatment Plant and a Water Treatment Plant. We also put sufficient effort in our waste disposal management system.



# COMMON PRACTICES RELATED TO EMPLOYEE WELFARE

We are very serious about our responsibilities towards our employees and the society as a whole. Employees makes our company, they are our greatest asset. What make them special is their dedicated efforts that has helped us to reach where we are.

Our constant endeavor to provide a safe and comfortable working environment, a culture which instills respect for people and concern for their welfare, and a strong focus on their training and development of career, the confidence and trust of our people. To stay on top of our duties within the facility, we follow the following common practices:

- Minimum Satisfactory Wages
- Voluntary Overtime Facility
- Holiday and Leave Facility
- Hygiene and Sanitation Facility
- First Aid Facility



Training Session for Sales & Marketing Team



Presenting the Cheque to Our College who is going to get married.



Employee Performance Award



Annual Picnic Sports Prize



Annual Picnic



Iftar Mahfil

# Remembrance





**Factory, Registered Office and Share Office:**

Khagan, Birulia (Ashulia), Savar, Dhaka-1341, Bangladesh.  
Hotline: +88 01759 666 333, Fax: +88-02-8932237  
E-mail: [info@simtexgroup.com](mailto:info@simtexgroup.com), Web: [www.simtexgroup.com](http://www.simtexgroup.com)